

HANDOUT 4.3

Dissecting a Salmon

Name _____

Slime layer and scales

The slime layer helps salmon to: _____

Draw a salmon scale, showing its growth lines.

Fish shape and features

Draw the main external features you can see on a salmon.

HANDOUT 4.3

Dissecting a Salmon

Fins and tail

On your diagram, label four median fins and two sets of paired fins you see on a salmon.

Draw one of the salmon's bony fins, showing its parts.

Gills and gill rakers

Write three or more observations about the gills and gill rakers. _____

Eggs or milt

State whether your fish is male or female and explain how you know. _____

Describe the egg or milt sack from the dissection (e.g., its shape, texture, any features, number of eggs)

HANDOUT 4.3

Dissecting a Salmon

The liver

Describe the colour and texture of the liver, then describe the appearance of the inside. _____

The heart

Describe where the heart is located and explain why it is located there. _____

The digestive system

Draw and label the main parts of the digestive system.

The swim bladder

What happens when a swim bladder is inflated with air? _____

HANDOUT 4.3

Dissecting a Salmon

The kidney

Describe the salmon kidney. _____

The ribs and backbone

Sketch the skeleton of a salmon, showing the ribs and backbone.

Lateral line

Draw a cross-section of the salmon, near the tail.

HANDOUT 4.3

Dissecting a Salmon

The head

What sense organs are located in the head of a salmon? _____

The brain

Draw the location of the brain on your sketch of the salmon's skeleton.

HANDOUT 4.4
Salmon External Anatomy

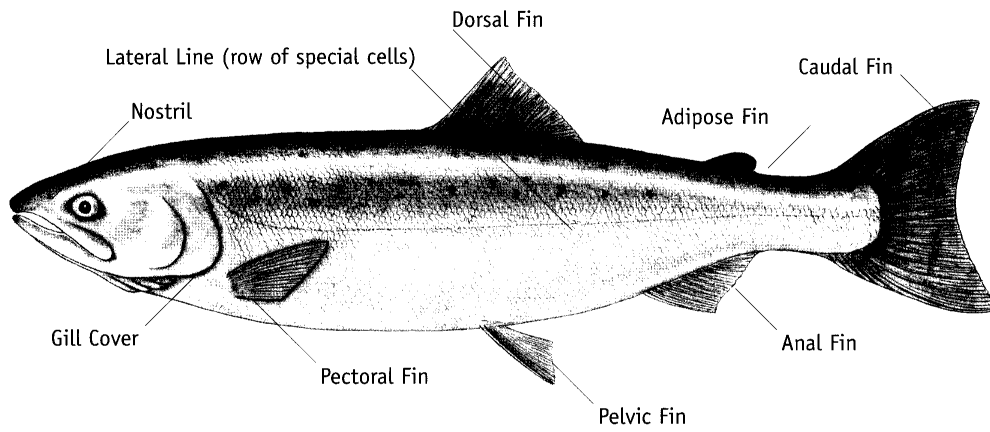


Illustration: Karen Utdal-Ekamm

HANDOUT 4.5

Salmon Internal Anatomy

female salmon

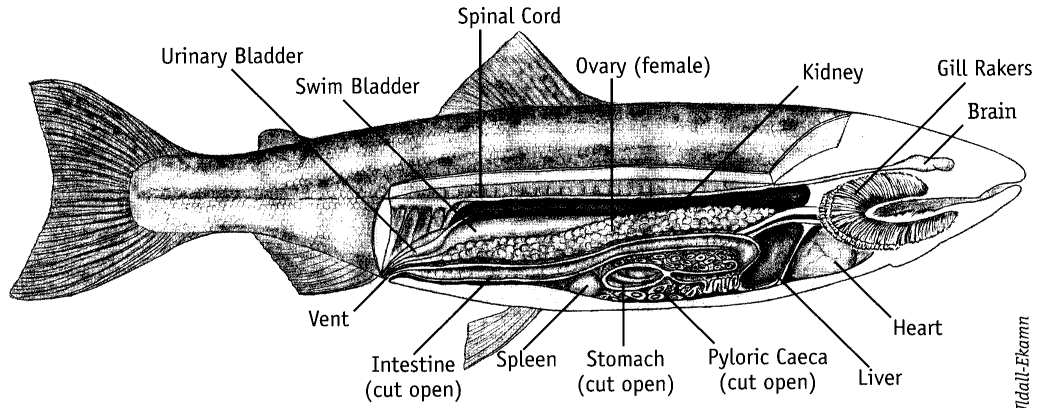
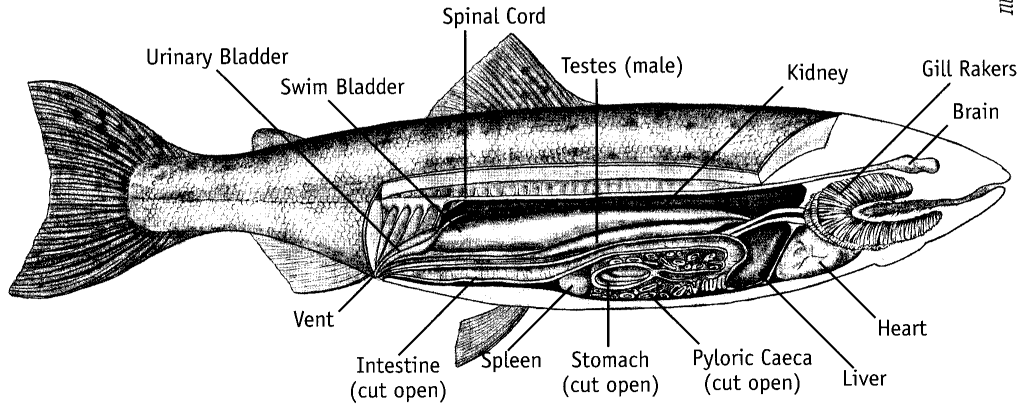


Illustration: Karen Urdahl-Ekamm

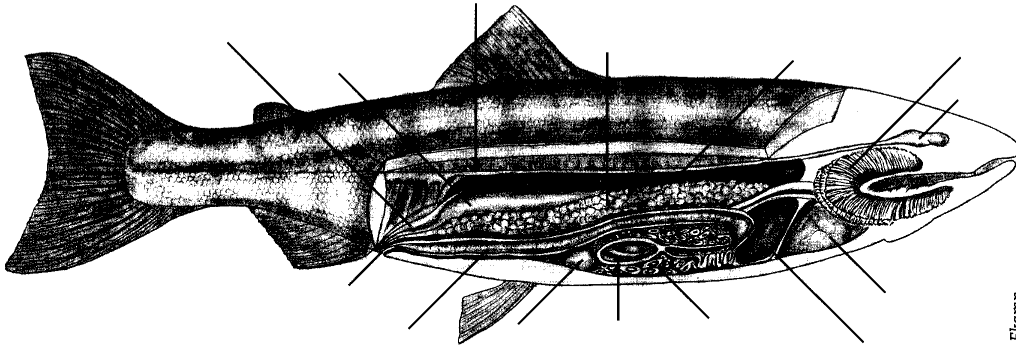
male salmon



HANDOUT 4.5

Salmon Internal Anatomy

female salmon



male salmon

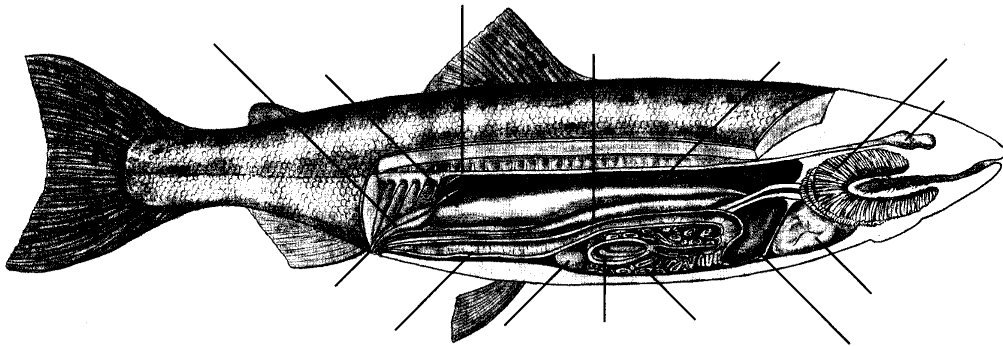
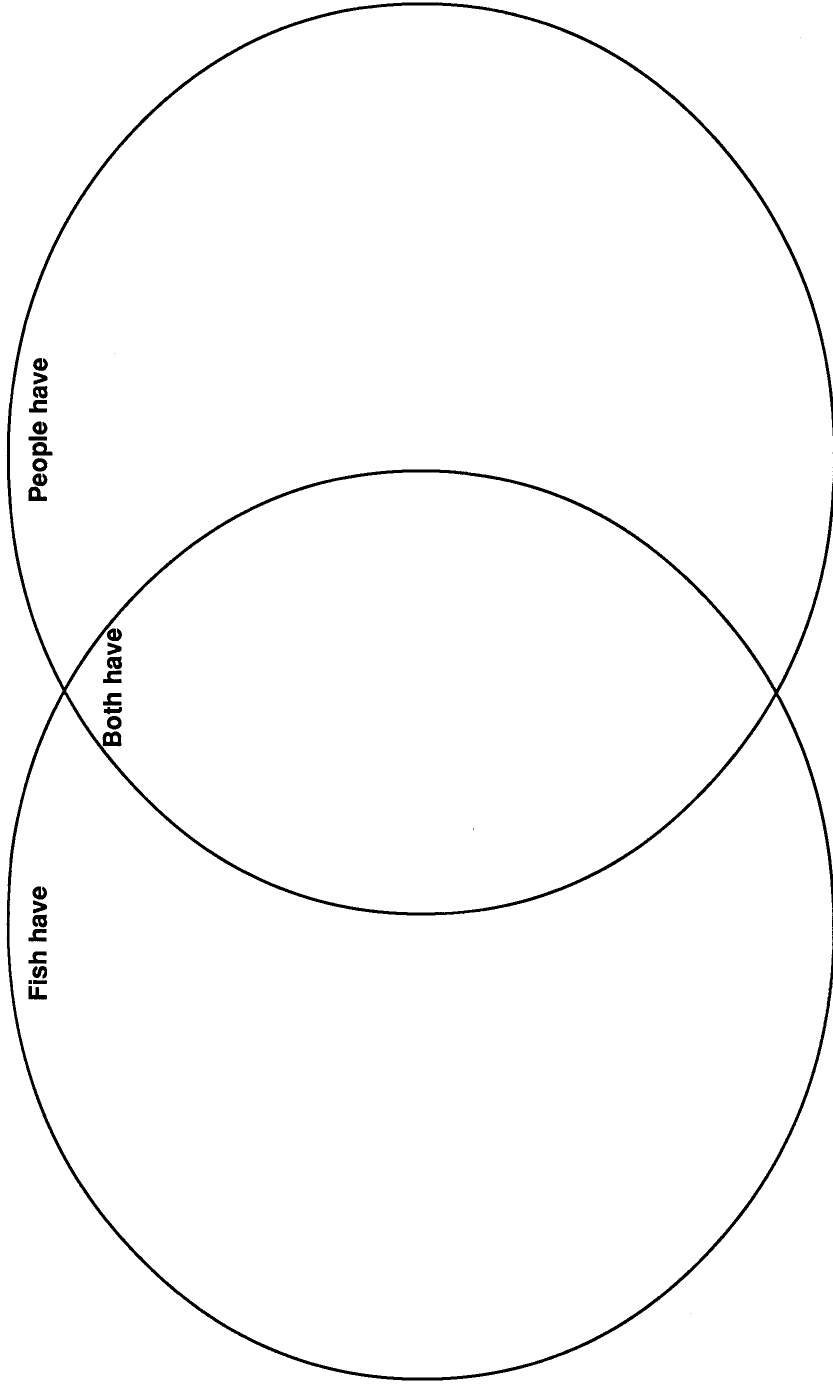


Illustration: Karen Uidal-Ekann



Where to these belong?

- gills
- tongue
- intestine
- fins
- teeth
- backbone
- eyes
- lungs
- backbone
- nostrils
- blood
- swim bladder
- nose
- mouth
- bladder
- scales
- brain
- pyloric caeca
- skin
- liver
- caeca
- arms and legs
- spleen
- stomach
- lateral line